



**Welcome to
Gladesmore Community School**

Dream it, **REACH** for it, **Achieve** it

Gladesmore is a great place to dream and achieve the best. The staff are caring, students are friendly, peaceful environment and loads of fun!

Our values are **R**espect, **E**nthusiasm, **A**ttitude, **C**ooperation and **H**ard-work.

We are really excited that you are joining our family and our values. It will be a little different from your primary school and here is a little taster for you on what to expect...

Gladesmore Quiz



My primary school has 500 students.

Gladesmore is a much bigger school, so how many students does Gladesmore have?

- 700
- 950
- 1100
- 1300

Correct answer:
1300 students

Gladesmore Quiz

My primary school has 20 teachers.

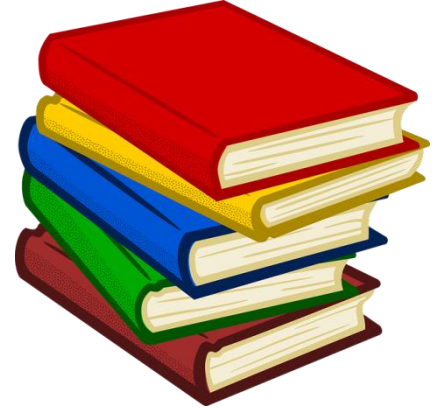


How many teachers does Gladesmore have?

- Less than 40
- More than 40

Correct answer:
More than 40

Gladesmore Quiz



My primary school has 3 lessons every day.

How many lessons does Gladesmore have?

- 3
- 4
- 5
- 6

Correct answer:

5

Fun facts about Gladesmore

- There are 9 tutor groups in year 7 and you will be allocated in one of them, where you will be registered every morning.
- You will have a form tutor, a co-tutor and at least 10 other teachers as well as a Head of Year who will be in charge of your year group.

How many teachers do you have in primary?

Fun facts about Gladesmore

- You will travel all around Gladesmore school site to go to your lessons. Every subject is in a different part of the school building.

How many classrooms do you learn in at the moment?

- There is one break in the morning and lunchtime. There are no breaks in the afternoon.

Do you have any breaks in the afternoon in primary?



Fun facts about Gladesmore



- There are different places to get food during break and lunchtime like the Tuck Shop and Glade Diner Canteen.



Where can you choose to eat from in primary?



- You can choose from hot and cold foods like:

cakes

pasta

sandwiches

ice cream

veggie burgers

pies

pasta

hot dog

biscuits

hot wings

curry

rice

salad

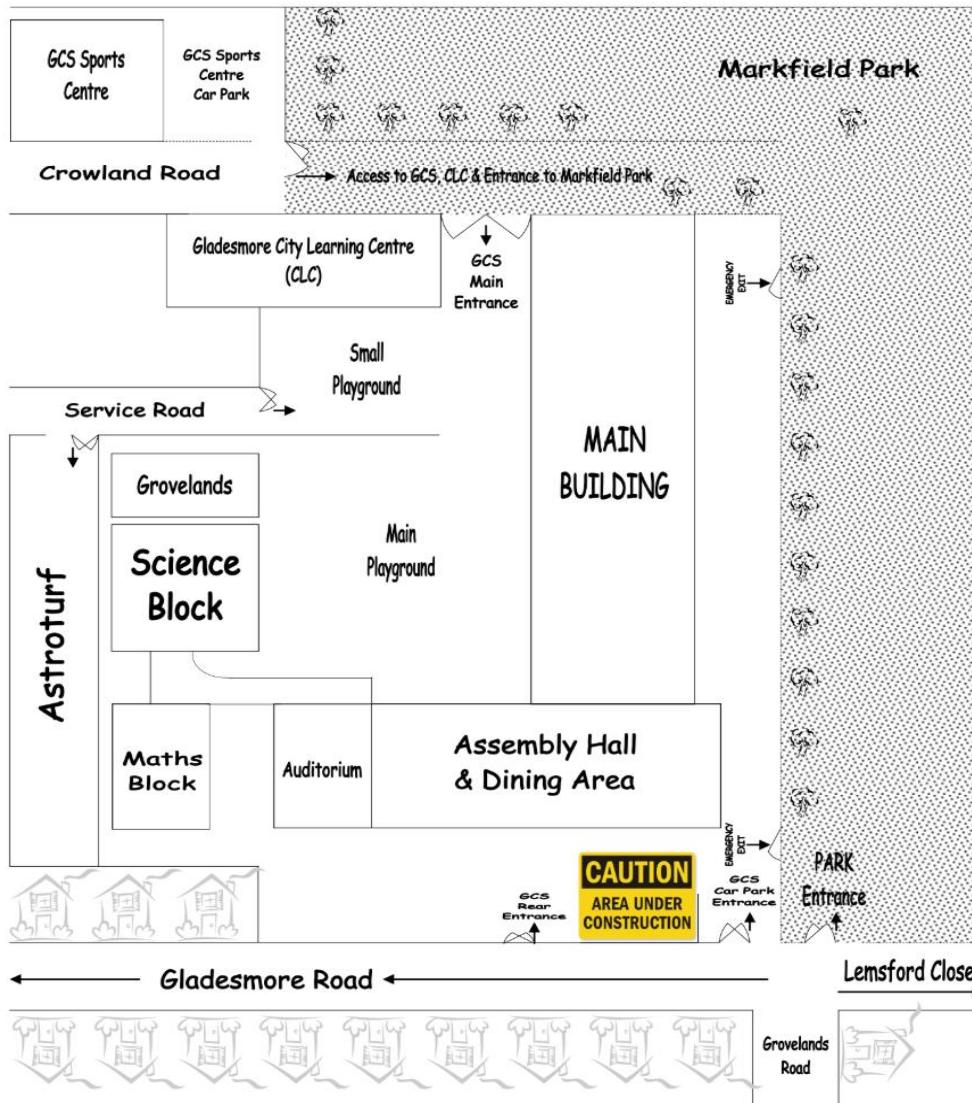
fruits

roast chicken

pizza

and a variety of drinks!

Gladesmore Community School Site Plan



Here is a site plan of
Gladesmore
Community School.



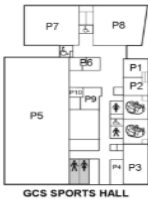
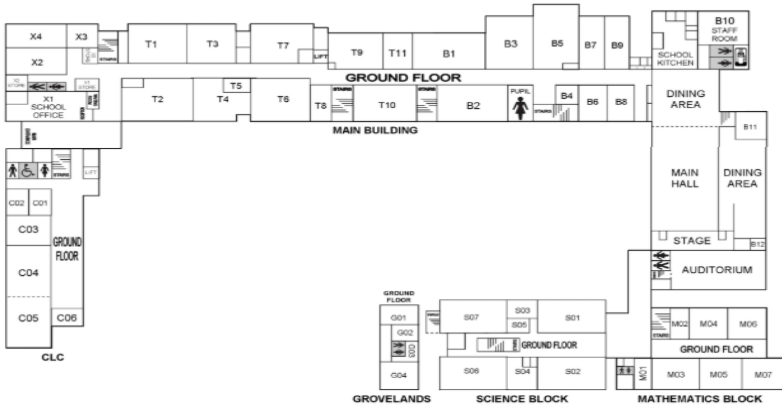
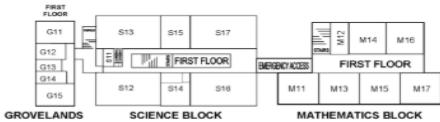
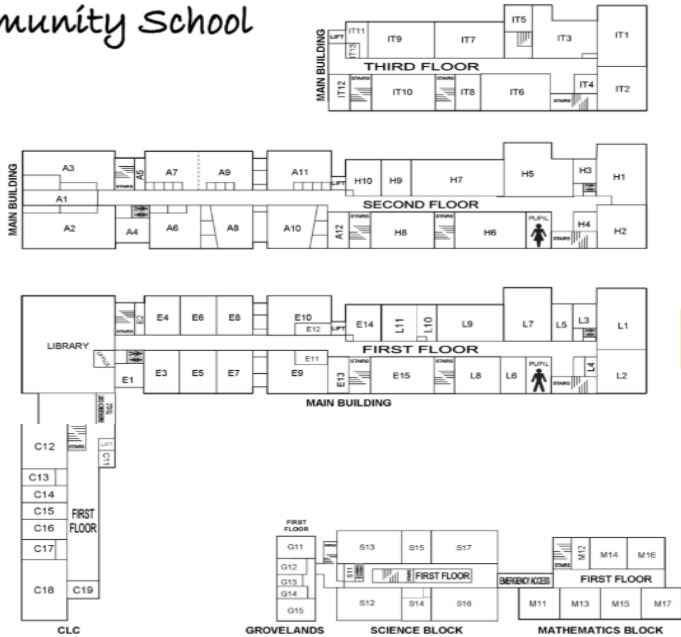
We are sure you will
love it!

Gladesmore Community School

ROOM PLAN

- First Floor (all buildings)
- Second Floor (main building)
- Third Floor (main building)

KEY	
	STAIRCASES
	STUDENT TOILETS
	STAFF TOILETS
	DISABLED TOILETS
	CHANGING ROOMS
	STAFF KITCHEN/ REFRESHMENTS



ROOM PLAN

- Ground Floor (all buildings)

← 3rd Floor

← 2nd Floor

CAUTION
AREA UNDER
CONSTRUCTION
DRAYTON
COTTAGE

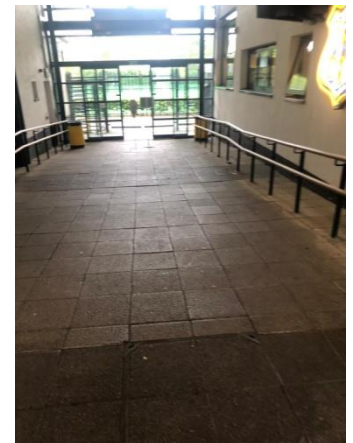
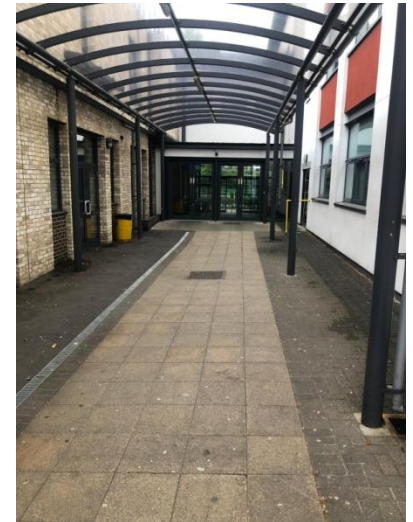
← 1st Floor

CAUTION
AREA UNDER
CONSTRUCTION
DRAYTON
COTTAGE

← Ground Floor

Here is a room plan of
Gladesmore
Community School.

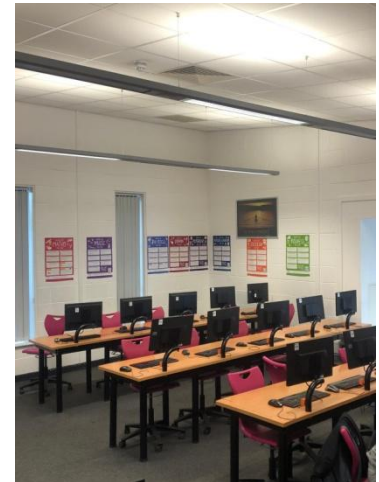
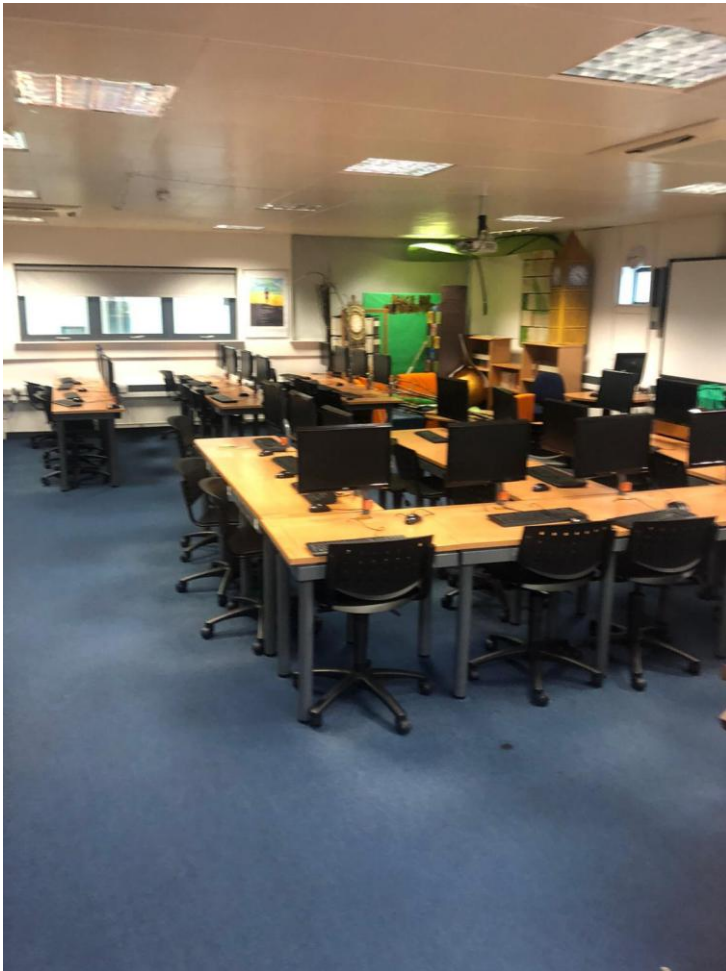
Entrance and Homework Club



Playground and Astroturf



Library and Success Lounge



Canteen and Assembly Hall



Different Faculties



Meet the staff



Mr Hartney
Head teacher

Ms Bardouille
Assistant Head Line
Manager of Year 7



Mr Djemali
Deputy Head

Mrs Jones
Safeguarding Officer



Ms Wright
SENCo
Head of AEN

And many more...

Timetable example Monday-Wednesday

Period	Monday	Tuesday	Wednesday
Registration	8:40am-8:50am	8:40am-8:50am	8:40am-8:50am
Reading	8:50am-9:10am	8:50am-9:10am	8:50am-9:10am
1	9:10am-10:10am	9:10am-10:10am	9:10am-10:10am
2	10:10am-11:10am	10:10am-11:10am	10:10am-11:10am
Break	11:10am-11:30am	11:10am-11:30am	11:10am-11:30am
3	11:30am-12:30pm	11:30am-12:30pm	11:30am-12:30pm
4	12:30pm-1:30pm	12:30pm-1:30pm	12:30pm-1:30pm
Lunch	1:30pm-2:20pm	1:30pm-2:20pm	1:30pm-2:20pm
5	2:20pm-3:20pm	2:20pm-3:20pm	2:20pm-3:20pm

Timetable example Thursday & Friday

Period	Thursday
Registration	8:40am-8:50am
KS3 Assembly	8:50am-9:30am
1	9:30am-10:30am
2	10:30am-11:30am
Break	11:30am-11:50am
3	11:50am-12:50pm
Lunch	12:50pm-1:40pm
4	1:40pm-2:40pm
KS3 Intervention	2:40pm-3:40pm

Period	Friday
Registration	8:40am-8:50am
Reading	8:50am-9:10am
KS3 PSHE	9:10am-9:45am
1	9:45am-10:45am
Break	10:45am-11:00am
2	11:00am-12:00pm
Lunch	12:00pm-1:00pm
3	1:00pm-1:45pm
4	1:45pm-2:45pm

Who can help me?

**we can
help**

Keyworker - to provide you extra support with work

Tutor - inform you about daily information in school

Head of Year - key information point during assemblies

SENCo - help/extra support for those who need it

Safeguarding Team - keeping school a safe place

Year 10 – stepping stones - year 10s helping year 7s

AEN Homework Club - extra support with homework

Any questions?

If you have any further questions, please do not hesitate to email Ms Wright. She is extremely friendly and can answer all of your questions!



jwt@gladesmore.com

We

can't

wait

to

meet

you!

